



Welcome to Nursery Autumn 1 Newsletter 2024

Welcome back to the Nursery children who have returned after the Summer Holiday.

You have been amazing and settled back into the routine very quickly.

Welcome to the new children that have joined our Nursery. We hope your child has settled well and is enjoying their time with us.

Routines

Session times are as follows:

- ☺ Morning - 8.50 to 11.50 (Please do not bring your child before 8.50)
- ☺ Afternoon - 12.20 to 3.20 (Due to the different finish times of siblings you can collect your child from 3pm)
- ☺ All day children 8.50 – 3.20

Routines

- ☺ Music and Movement is in the small hall on Wednesdays. Children can wear a PE kit and trainers.
- ☺ We will visit the library for a regular session every week on a Thursday. Your child will be able to borrow a book, bring it home and return it the following week. Non return of books will incur a charge so please ensure you look after it.
- ☺ Miss Williams takes her PPA (out of class teacher time for planning, preparation and assessment) on Tuesday morning and will be covered by Miss Smith.

Beginning of the session:

- ☺ Entrance to the Nursery is via the gates from the courtyard. In the mornings we are operating a one-way system. Bring your child through the main door, encourage them to put away their lunch box, water bottle and coat. Say goodbye and leave through the second door. It is important that you ensure your child is brought to school and collected on time. At the beginning of each session when the children are being dropped off they come in and engage in independent learning. Group learning then takes place once everyone is in and settled. We believe that this helps the children to be settled and ready to learn when we begin our small group sessions. If you have any feedback we would love to hear from you.

End of the session:

- ☺ We are kindly asking parents to wait outside the Nursery door when collecting your child so we can ensure your child goes to the correct parent/carer.

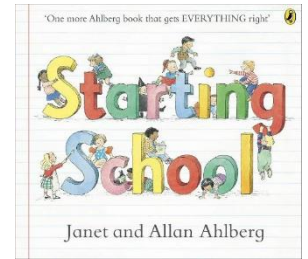
Staffing

- ☺ Miss Williams: Class teacher – Spiders Key Worker
- ☺ Miss Tandy: Nursery Nurse – AM Ladybirds Key Worker
- ☺ Mrs Gillespie: Nursery Nurse – Caterpillars Key Worker
- ☺ Mrs Satheesh - PM Ladybirds Key Worker
- ☺ Miss Smith – Higher Level Teaching Assistant

Our Curriculum – Here you will be able to find out the details about what your child will be learning week by week. We have included the books and songs we will focus on. If you have any questions, please ask.

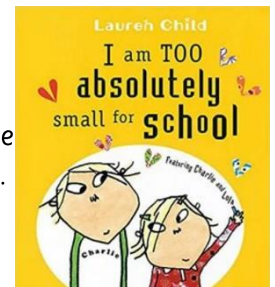
Week 1 Settling into Routines

- ☺ To get settled into a new setting and routine.
- ☺ To look at books independently.
- ☺ To use number in play.
- ☺ To talk about their family.
- ☺ To use small world.
- ☺ Song of the week – If you are happy and you know it



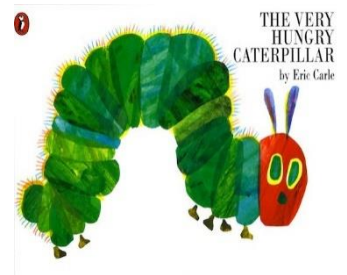
Week 2 Settling into Routines

- ☺ To make relationships, learning about others and growing confidence.
- ☺ To sing songs, remembering the words along with actions.
- ☺ To match developing physical skills to tasks and activities in the setting e.g. decide whether to crawl, walk or run across a plank, depending on its length and width.
- ☺ To make arrangements with shapes.
- ☺ To explore how things work, by taking them apart and experimenting with them e.g. how do they move, what can they be filled with
- ☺ Song of the week – Twinkle Twinkle



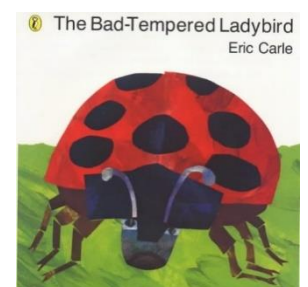
Week 3 The Very Hungry Caterpillar

- ☺ To show more confidence in new social situations becoming more outgoing with unfamiliar people, in the safe context of the setting.
- ☺ To develop attention span to listen to an adult for longer than 5 minutes.
- ☺ To use large-muscle movements to wave flags and streamers, paint and make marks.
- ☺ To begin to listen to stories.
- ☺ To sing and remember number songs.
- ☺ Poem of the week – Caterpillar cake



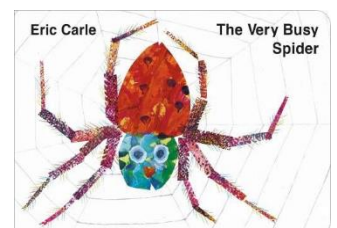
Week 4 The Bad-Tempered Ladybird

- ☺ To select and use activities and resources, with help when needed.
- ☺ To talk about their likes and dislikes.
- ☺ To begin to recall events and characters from stories.
- ☺ To use the names of some regular shapes e.g. circle, triangle.
- ☺ Song of the week – Ladybird, Ladybird



Week 5 The Very Busy Spider

- ☺ To show interest in achieving the goal they have chosen, or one which is suggested by adult/peer.
- ☺ To use story language and retell a story.
- ☺ To begin to transition to a pincer grip from a fist grip.
- ☺ To find friends whose name starts with the same initial sound/letter.
- ☺ To use inset puzzles with numbers and shapes.
- ☺ To begin to sing songs, remembering some of the words along with actions to support their working memory
- ☺ Song of the week - Incy Wincy Spider



Weeks 6 & 7 'Into the Jungle' - Two-week topic themed around Jungles

- ☺ Come dressed as a character from a Jungle story – Wednesday 23rd October.
- ☺ To be proud of the things they have achieved.
- ☺ To continue to use a wider range of vocabulary.
- ☺ To be almost independent at managing self-care.
- ☺ To listen to and join in with stories and poems, when reading one-to-one and in small groups
- ☺ To use more and fewer.
- ☺ To experiment with ways of playing instruments e.g. loud/quiet.



PSHE through our whole school scheme - Jigsaw

Our theme this half term across the school is Being me in my world

- ☺ Who...Me?
- ☺ How am I feeling?
- ☺ Being at Nursery.
- ☺ Gentle Hands.
- ☺ Our rights
- ☺ Our responsibilities



Personal Care

We would expect children who are starting Nursery to be independent or almost independent in managing their toileting needs. The exception to this would be any child with a medical need. As mentioned in the induction information, we can manage children who have the odd accident - maybe because they are engrossed in their play or anyone with a care-plan because of their medical need - but we are unable to manage children who are yet to be toilet trained by their parents at home. If your child is not yet independent, please work with them to support them to achieve this as soon as possible. For some useful tips please see the website

<https://www.eric.org.uk/poo-and-wee>

Clothing

Please ensure that all your child's belongings (especially cardigans and jumpers) are clearly labelled. We are working hard to help the children become independent, so we would be extremely grateful if you could encourage your child to get dressed independently.

Lunch Boxes

We encourage all children to bring a healthy packed lunch to school with a good portion of fresh fruit. We ask parents to use due discretion when packing lunches to ensure children have a balanced and healthy lunch. Due to children having nut allergies we ask that parents do not use peanut butter /Nutella in their children's sandwiches or include cereal bars containing nuts in their child's lunch box. As you will appreciate, even a small trace of peanut can cause a severe reaction in some children. We would like to thank you all for understanding with this.

Starting Primary School in September 2024

Just a reminder that you will need to apply online for your child's school place for September 2025. Children born between 1 September 2020 and 31 August 2021 need to apply by 15th January 2025. You can get all the information in this link below. <https://www.milton-keynes.gov.uk/schools-and-lifelong-learning/school-admissions/starting-primary-or-juniormiddle-school-september>

Year Group Email address

If you need to contact me, you can email me on - nursery@priorityrise.milton-keynes.sch.uk. Or call the office and I will call you back. Please appreciate that the office staff experience a large volume of calls especially at the beginning and the end of the day.

